

USING MLP TO ADDRESS THE LEGAL NEEDS AMONG RACIAL & ETHNIC MINORITIES LIVING WITH HIV

December 7, 2022

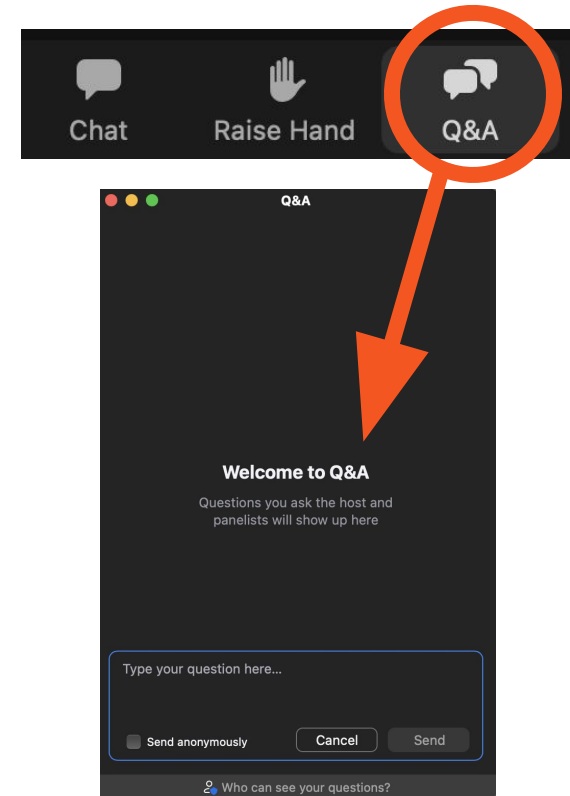
HRSA

Health Resources & Services Administration

This project is supported by the Health Resources and Services Administration (HRSA) of the U.S. Department of Health and Human Services (HHS) as part of an award totaling \$625,000 with 0 percent financed with non-governmental sources. The contents are those of the author(s) and do not necessarily represent the official views of, nor an endorsement by HRSA, HHS, or the U.S. Government. For more information, please visit [HRSA.gov](https://www.hrsa.gov).

Housekeeping

- Attendees are muted throughout the webinar.
- Type questions into **Q&A**.
- To activate captions, select “Live Transcript” and “Show Subtitle.”
- This webinar will be recorded and shared at medical-legalpartnership.org/resources/
- Email ncmlp@gwu.edu for help.



Today's Moderators & Opening Remarks



KAYLA MCGOVERN

Center Associate,
National Center for
Medical-Legal Partnership



OMAR MARTINEZ

Associate Professor,
University of Central Florida

Today's Panelists



SONYA HUNT GRAY

Team Lead, Service Expansion
Investment Management Office of Health
Center Investment Oversight at BPHC



AMY NELSON

Director of Legal Services,
Whitman-Walker Health



ERIN LOUBIER

Sr Director for Health and Legal
Integration & Payment Innovation
Organization,
Whitman-Walker Health



THERESA BRABSON

Legal Director and Duffy Fellow
Legal Clinic For The Disabled



ANDREW MAUDE

Staff Attorney
Legal Clinic For The Disabled

Today's Topic and Learning Objectives

MLPs are continuing to help individuals living with HIV address their health harming legal and social needs. In this webinar, the presenters will discuss the current landscape of healthcare and social needs for this patient population. Presenters will also share best practices and examples for health center and MLP staff to improve screening and implementation of legal interventions that are designed to help reduce and prevent racial disparities and health inequities for people with HIV.

LEARNING OBJECTIVES:

- Discuss the growing disparities and inequities in HIV impacting racial and ethnic minorities
- Identify the health-harming legal needs impacting people living with HIV
- Discuss the current landscape of healthcare and social service organization serving the needs of people living with HIV
- Compare and evaluate existing screenings for health-harming legal needs
- Evaluate the effectiveness of practices being integrated into medical-legal partnerships across the country



OMAR MARTINEZ

Associate Professor,
University of Central Florida

Ground Ourselves | A Patient's Story

Mounting Needs:

1. Housing Assistance → Threatened
2. Legal Issues with → IRS, Medicaid, and others
3. Hospitalization & Housing → Threatened

***Without a medical-legal partnership:
Outcomes are grim.***



KAYLA MCGOVERN

Center Associate,
National Center for
Medical-Legal Partnership

Improving Health Outcomes by Creating New Systems Built on Justice

- *At the end of 2019, an estimated **1,189,700 people aged 13 and older had HIV in the United States**—including an estimated 13% people whose infections had not been diagnosed.*
- *In the U.S. in 2019, there were an estimated **8,900 new HIV infections among Black gay and bisexual men**; **7,900 among Hispanic/Latine gay and bisexual men** as compared to **5,100 among White gay and bisexual men**.*
- *The current **Ending the HIV Epidemic in the U.S. 2030 Target Goal is to have 50% of people in the U.S. who are eligible for PrEP to prescribed it.***
 - *In 2019, 8% of Black Americans, 14% of Latine Americans, and 60% of White Americans who were eligible for PrEP were prescribed it.*



KAYLA MCGOVERN

Center Associate,
National Center for
Medical-Legal Partnership

The History:

HRSA's Commitment to Health Equity & Ending
the HIV Epidemic

Today's Panelists



SONYA HUNT GRAY

Team Lead, Service Expansion
Investment Management Office of Health
Center Investment Oversight at BPHC



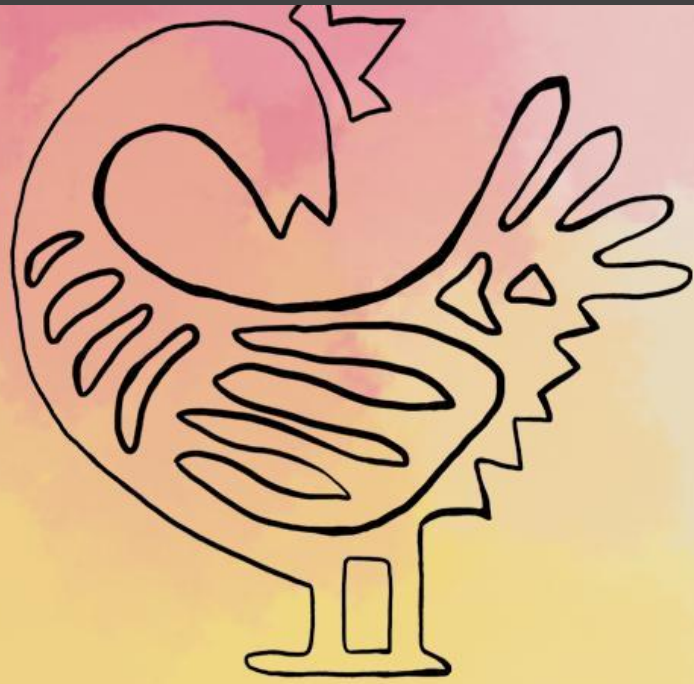
Using MLP to Address the Legal Needs Among Racial and Ethnic Minorities Living with HIV

December 7, 2022

Sonya Hunt Gray, Team Lead
Service Expansion Investment Management
Office of Health Center Investment Oversight
Bureau of Primary Health Care (BPHC)

Vision: Healthy Communities, Healthy People





Sankofa

“Return and get it”

symbol of importance and learning from
the past

**Lessons Learned
from the HIV
Response**

World AIDS Day 2022 Theme:

“Putting Ourselves to the Test: Achieving Equity to End HIV”

What is Health Equity?

Striving for the highest possible standard of health for all people and giving special attention to the needs of those at greatest risk of poor health based on social conditions.



Framing the Issue

- **Health Disparities:** Differences in health outcomes and their determinants among segments of the population as defined by social, demographic, environmental, or geographic category.
- **Social Determinants of Health:** Conditions in the **places** where people live, learn, work, and play that affect a wide range of health and quality-of-life-risks and outcomes.



The Ryan White HIV/AIDS Program

- There are nearly **38 million people** across the globe with HIV, including about **1.2 million Americans**.
- In 2021, more than **half of people with diagnosed HIV in the U.S.** – nearly 576,000 people – received HIV care, treatment, and support services through the Ryan White HIV/AIDS Program (RWHAP).
- Of these clients, **89.7% were virally suppressed**, which means they cannot sexually transmit HIV to an HIV-negative partner. This is a significant increase from 69.5% of RWHAP clients virally suppressed in 2010.

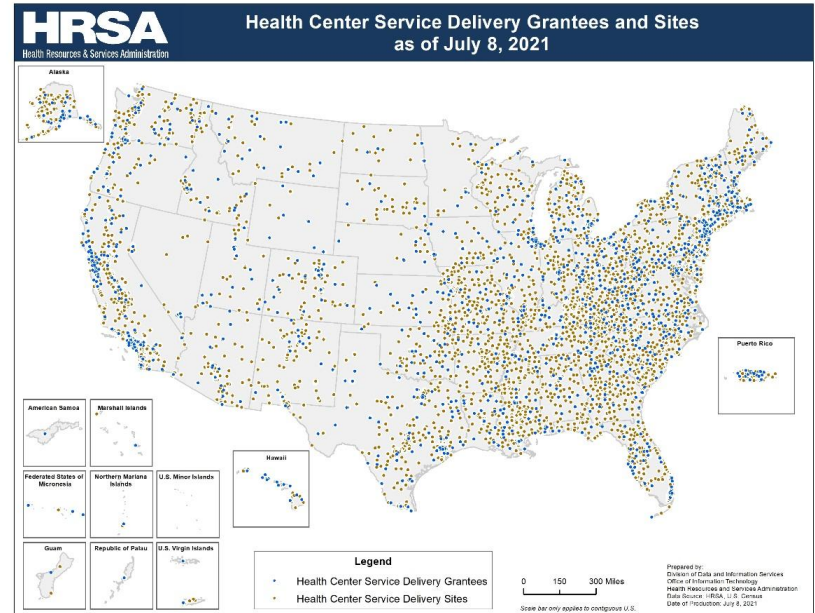


PUTTING OURSELVES TO THE TEST
Achieving Equity to End HIV

Health Center Program Fast Facts

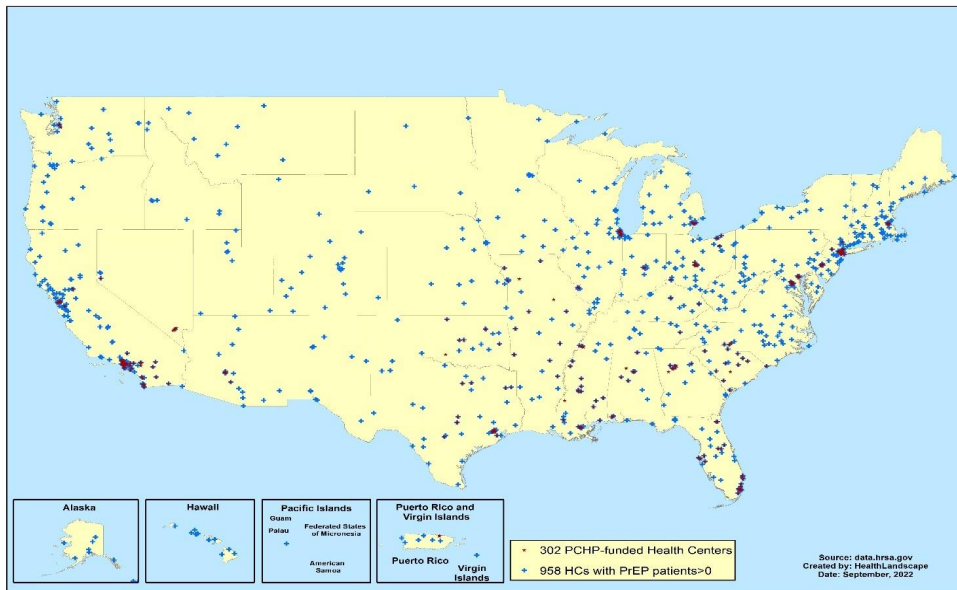
- Nearly **1,400** health centers operate more than **14,000** service delivery sites
- More than **30 million** patients
- Health centers provide **patient-centered, comprehensive, integrated care** by offering a range of services:
 - Primary medical, oral, and mental health services
 - Substance use disorder and medication-assisted treatment (MAT) services
 - Enabling services such as outreach, case management, health education, interpretation services, and transportation

Source: Uniform Data System, 2021



Ending the HIV Epidemic – Health Center Progress

*Health centers deliver critical primary care and HIV prevention services. In 2021, 958 health centers provided PrEP, including 302 that were PCHP-funded.**



958 Health Centers

- Served over **25 million** total patients
- **65%** racial or ethnic minorities
- Conducted nearly **3 million** HIV tests
- Provided PrEP to **79,163** patients
- Linked **83%** of newly diagnosed patients to care within **30** days

302** PCHP-Funded Health Centers

- Served nearly **9 million** patients
- **79%** racial or ethnic minorities
- Conducted over **1.7 million** HIV tests
- Provided PrEP to **52,477** patients
- Linked **86%** of newly diagnosed patients to care within **30** days

Source: 2021 Uniform Data System (UDS).

*Pre-exposure prophylaxis (PrEP), Ending the HIV Epidemic - Primary Care HIV-Prevention (PCHP) funding.

**FY 2020-21 PCHP-funded Health Centers (HCs) only (FY 2020 = 195 HCs, FY 2021 = 107 HCs). An additional 64 HCs received PCHP funding in FY 2022.



Thank You!

Bureau of Primary Health Care (BPHC)

Health Resources and Services Administration (HRSA)

Sonya Hunt Gray

Team Lead

Service Expansion Investment Management

Office of Health Center Investment Oversight

SGray@HRSA.gov

bphc.hrsa.gov



[Sign up for the *Primary Health Care Digest*](#)



Medical-Legal Partnership:

Collaborations to Address Health-Harming Legal
Needs of People Living With HIV

Whitman-Walker Health

Federally-Qualified Health Center in
Washington, DC

Today's Panelists



AMY NELSON

Director of Legal Services,
Whitman-Walker Health



ERIN LOUBIER

Sr Director for Health and Legal
Integration & Payment Innovation
Organization,
Whitman-Walker Health

Whitman-Walker Health: An FQHC serving metro Washington, DC with MLP/Lawyers on their integrated care team since 1986 focused on addressing the structural and legal needs among people living with HIV and the LGBTQ community

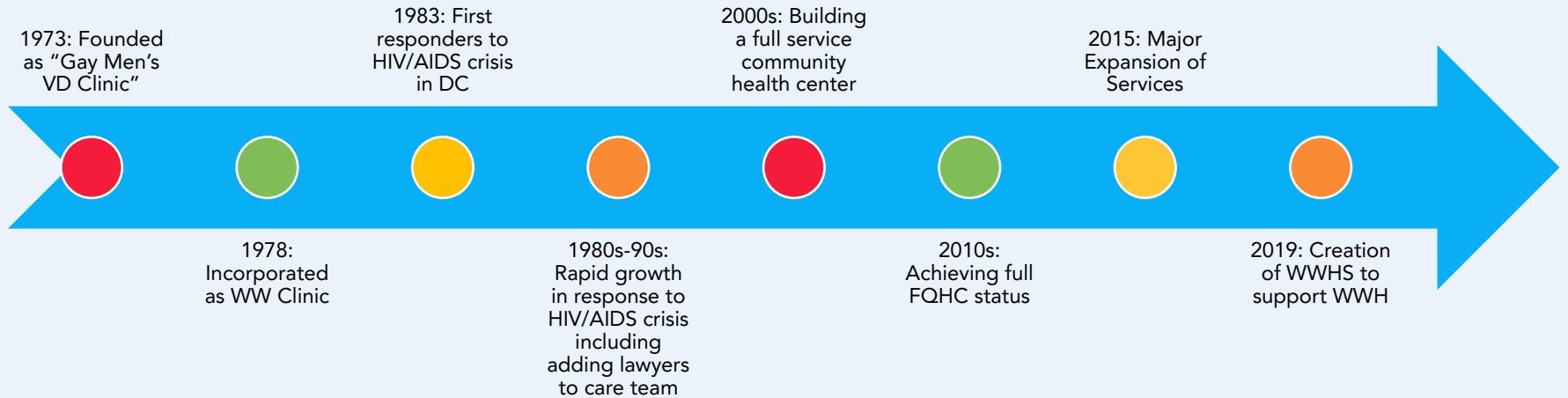
Erin Loubier & Amy Nelson
December 7, 2022

© 2022 Whitman-Walker



WHITMAN-WALKER HEALTH
We see you.

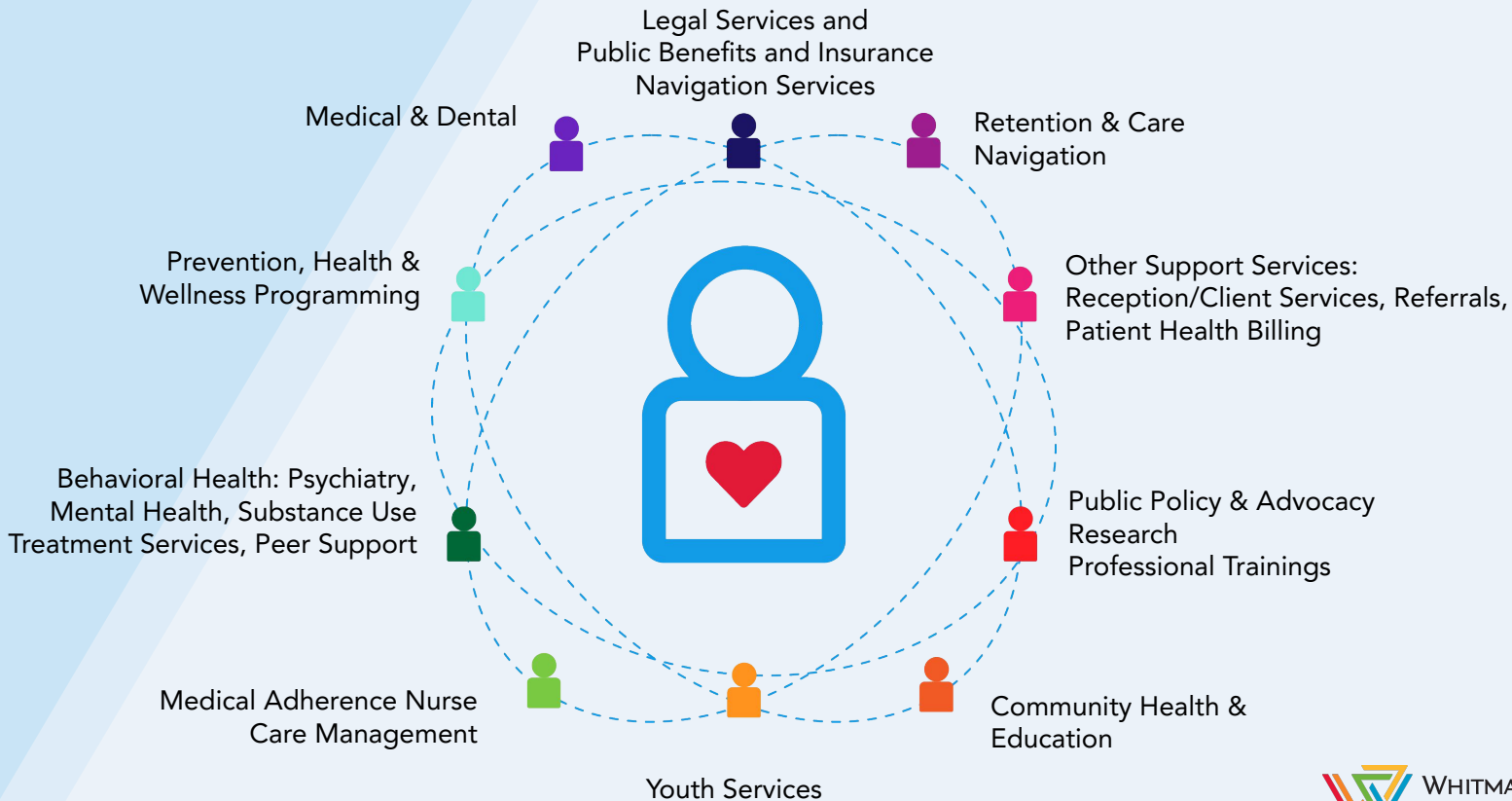
Whitman-Walker Health from 1973-2022



*Image not to scale

Whitman-Walker Health's Integrated Patient-Centered Care Team

** 2023 celebrates 50 years of Whitman-Walker care **





Legal Services Role on the Care Team to Address Health Harming Legal Needs by:

PROVIDIN

Continuum of legal assistance to thousands of patients: direct representation, counseling, problem-solving

NAVIGATI

Eligibility, enrollment/renewals, and coverage issues through unique workforce specialist team of Public Benefits and Insurance Navigators who also screen patients for legal barriers to access and care

EMPOWERIN

Clients and other service providers through education and know-your-rights outreach

IMPROVIN

the local/national programs and systems on which our clients rely by working to remove systemic barriers

Legal Services Practice Areas

Public Benefits

Medicaid

ADAP

QMB/Medicare

Immigration

Asylum

DACA/TPS

Work Permits/Green Cards

Identity Docs

Court Order for Name Change /
Gender Change

DMV/Birth Certificate

SSA/Passport

Discrimination

Employment/School

Housing/Public Accommodations

Access to Healthcare

Estate Planning

Wills

Powers of Attorney

Advance Medicare Directives

Insurance

Health

Disability

2021 Cases

Legal Team

1,201 cases for
1,004 clients

Percent Living w
HIV
32%



WHITMAN-WALKER HEALTH
WE SEE YOU.

Public Benefits and Insurance Navigation Services

Eligibility and Enrollment

Public Insurance

Individual Insurance

Programs to reduce costs
(ADAP, ACA, subsidies, SFS)

Navigating Care

Health Insurance Literacy

Connections to Care

Social Needs & Other Services

Coverage Disputes

Prescriptions

Medically necessary services

Cost of care and access

2021 Cases

Public Benefits Team
1,932 cases for
1,342 clients

Percent Living w HIV
66%

Screening for Health Harming Legal Needs

Insurance Issues

Immigration

Employment / Income / Housing

Identity Docs to Update





Expanding our capacity through partnerships with lawyers in our Pro Bono Legal Clinics:

In total, WWH Legal Services has handled more than:

- 4,000 Future Planning cases
- 6,800 Medicare Part D cases
- 6,000 Initial SSI/SSDI Applications
- 3,000 Social Security Appeals



Since 2012, WWH's Name and Gender Legal Clinic:

- Served 2,400+ Clients in 4,900+ Cases
- Trained 400+ Volunteers
- Delivered \$25,000+ client financial assistance



In 2022, our client base is more than 75% people of color; 21% trans/nonbinary identified; and 58% living with HIV.



WHITMAN-WALKER HEALTH
WE SEE YOU.

Legal Clinic for the Disabled

Civil Legal Services Organization in
Philadelphia, PA

Today's Panelists



THERESA BRABSON

Legal Director and Duffy Fellow
Legal Clinic For The Disabled



ANDREW MAUDE

Staff Attorney
Legal Clinic For The Disabled

The Legal Clinic for the Disabled (LCD) – What we do?

- Provide free legal services to low-income people with chronic physical or mental health conditions in Philadelphia and the surrounding PA counties.
 - Legal services address housing, utilities, public benefits (e.g., SSI or SSDI), family law, domestic violence, and basic estate planning
- Help clients overcome legal obstacles that might otherwise affect their independence, health, safety and quality of life.



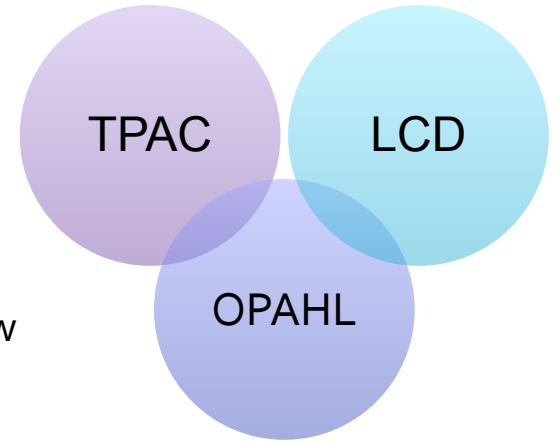
LCD – Medical Legal Partnership (MLP) Model

- Places legal advocates onsite and integrates them into the healthcare team for attorneys and healthcare providers to work together to identify health-related legal needs, such as unsafe housing or food insecurity.
- Operates from seven (7) sites in Philadelphia
 - Stephen Klein Wellness Center, Hub of Hope, St. Christopher’s Children Hospital, Family Practice and Counseling Network, Nemours Children’s Health, **The Philadelphia AIDS Consortium (TPAC)**



OPAHL, TPAC, and LCD

- NIH funded study to explore benefits of legal support in HIV care.
- Implements the training program established by the **Organizational Partnership for Healthy Living (OPAHL)**, which is designed to help healthcare organizations integrate “legal care” into their services for people living with HIV.
- The training includes educational modules for healthcare / social support providers, such as relevant areas of law and how to screen patients for health-harming legal needs.
 - Providers use resiliency-based questionnaires to screen patients and identify areas of support.



On the Ground:

The Study in Action

- 1. Two social support coordinators screen eligible patients**
 - Resiliency based questionnaire
 - If the patient screens positive for a health harming legal need, a referral is made to the attorney
 - If the patient screens positive for a non-legal issue other resources / supports are provided
- 2. Attorney on-site 1 day a week for in-person consultations**
 - Relationship building (i.e., trust)
 - Part of the patient's care team
- 3. Attorney performs an approx. 30-minute intake and gives legal advice**
 - Support the patient if needed past the initial consultation (e.g., court involved)
- 4. Study team performs final assessments**
 - Health impact questionnaire
 - Viral load count



What we have seen so far...

- Since mid-October, **14** clients served (**2** study eligible)
- Legal issues addressed
 - Advanced Planning (**6**)
 - Landlord / Tenant (**3**)
 - Domestic Violence (**2**)
 - Misc. (**3**)
- Community Support / Engagement
- Provider Education



QUESTIONS

Please put questions in the Q&A Panel.

Today's Panelists



SONYA HUNT GRAY

Team Lead, Service Expansion
Investment Management Office of Health
Center Investment Oversight at BPHC



AMY NELSON

Director of Legal Services,
Whitman-Walker Health



ERIN LOUBIER

Sr Director for Health and Legal
Integration & Payment Innovation
Organization,
Whitman-Walker Health



THERESA BRABSON

Legal Director and Duffy Fellow
Legal Clinic For The Disabled

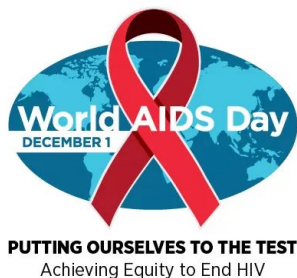


ANDREW MAUDE

Staff Attorney
Legal Clinic For The Disabled

Resources

Resources for Health Center MLPs



Health Resources and Services Administration (HRSA) – HIV/AIDS Bureau

New! Notice of Funding Opportunity: Fiscal Year 2023 Ending the HIV Epidemic – Primary Care HIV Prevention (HRSA-23-025)

Application Due Date: January 17, 2023

Supplemental Information Due Date in EHBs: February 16, 2023

More information available at:
<https://bphc.hrsa.gov/funding/funding-opportunities/primary-care-hiv-prevention/fy-2023-pchp>



Toolkit: A planning, implementation, and practice guide for building and sustaining a health center-based MLP
<https://medical-legalpartnership.org/mlp-resources/disability-tip-sheet/>



Eliminating Hurdles to Life Saving Medication Patients to Policy Impact
<https://medical-legalpartnership.org/wp-content/uploads/2018/04/Eliminating-Hurdles-to-Life-Saving-Medications.pdf>



Tools: Screening for Disability Discrimination (Adults and Children)
<https://medical-legalpartnership.org/mlp-resources/disability-tip-sheet/>



National HIV/AIDS Strategy, United States 2022-2025
<https://www.hiv.gov/events/awareness-days>



Align your communications, events, and community resources with Awareness Days.
<https://www.hiv.gov/events/awareness-days>

Research and Literature

Martinez, O., Munoz-Laboy, M., & Davison, R. (2022). **Medical-legal partnerships: An integrated approach to advance health equity and improve health outcomes for people living with HIV.** *Frontiers in Reproductive Health*, 4, 871101. <https://doi.org/10.3389/frph.2022.871101>

Fuller, S. M., Steward, W. T., Martinez, O., & Arnold, E. A. (2020). **Medical-Legal Partnerships to Support Continuity of Care for Immigrants Impacted by HIV: Lessons Learned from California.** *Journal of Immigrant & Minority Health*, 22(1), 212–215. <https://doi.org/10.1007/s10903-019-00919-0>

Muñoz-Laboy, M., Martinez, O., Davison, R., & Fernandez, I. (2019). **Examining the impact of medical legal partnerships in improving outcomes on the HIV care continuum: rationale, design and methods.** *BMC Health Services Research*, 19(1), N.PAG. <https://doi.org/10.1186/s12913-019-4632-x>

Yamanis, T. J., Zea, M. C., Ramé Montiel, A. K., Barker, S. L., Díaz-Ramírez, M. J., Page, K. R., Martinez, O., & Rathod, J. (2019). **Immigration Legal Services as a Structural HIV Intervention for Latinx Sexual and Gender Minorities.** *Journal of Immigrant & Minority Health*, 21(6), 1365–1372. <https://doi.org/10.1007/s10903-018-0838-y>

The Role of Housing in Ending the HIV Epidemic

ISSUE BRIEF
The Role of Housing in Ending the HIV Epidemic

Powerful HIV prevention and treatment tools help keep people healthy and prevent HIV transmission, but **nonmedical factors**, known as **social determinants of health**, also influence HIV-related health outcomes. Social determinants of health are the conditions in which people are born, grow, work, live, and age, and the broader set of forces and systems that shape conditions of daily life. **Housing acts as a social determinant of health; research tells us that where someone lives influences their health and well-being, and that stable housing is associated with better health outcomes.**

1. How Housing Affects Health

Where someone lives—in terms of the stability, affordability, and quality of housing, and the characteristics of their neighborhood—can have a profound impact on their health and well-being. **A lack of affordable housing options can limit a person's ability to obtain stable housing and access other services, including staying engaged in ongoing health care. An overall inadequate supply of affordable housing in the United States, paired with regulations that discourage the development of new housing, creates barriers to maintaining stable housing for many.**

Over the last few years, the average rent in the United States has increased 8%¹. Job and income losses related to the COVID-19 pandemic have increased challenges with housing affordability for millions of households, especially lower-income households and households of color.² In 2020, 50% of households across the country were cost-burdened, meaning they were paying more than 30% of their income on housing.³ Fourteen percent of households were severely cost-burdened, paying more than 50% of their income on housing.⁴ The increase in unaffordable housing is linked to increasing rates of housing instability and homelessness. Some populations, especially Black/African American households referred to as Black, Hispanic/Latino, and other communities of color, as well as transgender communities, face housing-related discrimination, further limiting their access to stable housing.⁵

Stable housing is closely linked to successful HIV-related health outcomes. People experiencing homelessness or housing instability have higher rates of HIV and mental health disorders than people with stable housing.⁶ People experiencing homelessness or housing instability are also more likely to engage in activities associated with increased chances of HIV acquisition or transmission, including substance use, injection drug use, and having multiple sex partners.⁷ Factors that can also contribute to higher rates of newly transmitted infections (NTIs) and hospitalizations⁸ include: people with HIV who experience greater risk for inadequate care and treatment due to unstable housing and housing loss. According to CDC data, in 2019, 7% of people with diagnosed HIV experienced homelessness or other forms of unstable housing.⁹

30% of research cited the **housing issue** as a **barrier**

17% of people with diagnosed HIV experienced homelessness or unstable housing

**U.S. Department of Health and Human Services
Centers for Disease Control and Prevention**

Centers for Disease Control and Prevention Issue Brief highlighting how CDC, other federal agencies, and community partners are collaborating to equitably address housing and HIV care needs. Available at <https://www.cdc.gov/hiv/policies/data/role-of-housing-in-ending-the-hiv-epidemic.html>.

Wellness Resource

Calm World AIDS Day meditation

Narrated and Authored by Tamara Levitt
(free)

https://www.calm.com/player/6eKumgcW0L?share_token=v1om6SETwOMNYr_uVnsZzo3gPfqG0iA56q8hJhcEG3lDhPzyevIEvu50l0UTZ01la6UY9dLuAocs9caCNpok0ONjyFHJMCJLLDgTUvhgVouvna



Happening Soon!

Learning Collaboratives in 2023: **MLP Sustainability, Screening for Legal Needs of Special Populations, and Maternal Health.**

Subscribe to our **newsletter** to stay up-to-date on our events and resources: **bit.ly/mlpnews**

THANK YOU!

Please take a moment to complete our survey. Link is in the chat.