

# Leveraging Health Center Medical-Legal Partnerships to Advance Community-Oriented Policing

September 30, 2021 at 2:00 PM  
ET



Supported by HRSA / BPHC

National Center for Medical  Legal Partnership  
AT THE GEORGE WASHINGTON UNIVERSITY

Welcome and thank you for joining us today.

The webinar will begin in just a moment.

# Acknowledgements



This project is supported by the Health Resources and Services Administration (HRSA) of the U.S. Department of Health and Human Services (HHS) as part of an award totaling \$625,000 with 0 percent financed with non-governmental sources. The contents are those of the author(s) and do not necessarily represent the official views of, nor an endorsement by HRSA, HHS, or the U.S. Government. For more information, please visit [HRSA.gov](https://www.hrsa.gov).

# Housekeeping:

- Turn up your volume to hear us.
- Everyone is on mute upon entry.
- Use the chat box to send questions or comments.
- Need help? Email [aprildaniels@gwu.edu](mailto:aprildaniels@gwu.edu).
- Please complete the survey at the end.
- Yes, the session will be recorded.

# Introductory Remarks

**Bethany Hamilton, JD**

Co-Director, National Center for Medical-  
Legal Partnership



# The Work of NCMLP



- **Transform the focus** of healthcare and civil legal aid practice from people to populations;
- **Build and inform the evidence base** to support the medical-legal partnership approach; and
- **Redefine inter-professional education** with an emphasis on training healthcare, public health and legal professionals together.

# Learning Objectives

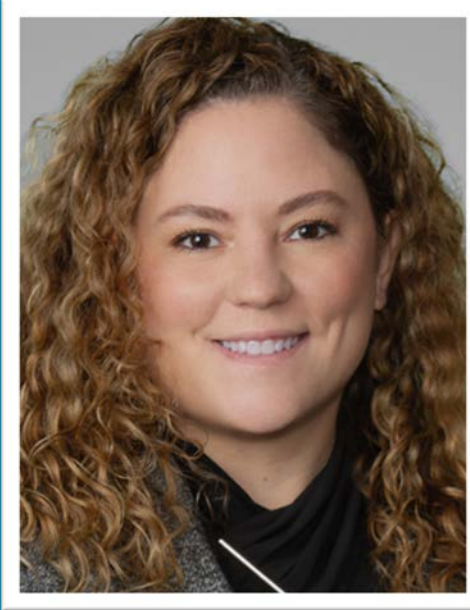
Help health center and medical-legal partnership staff better understand:

1. how we define the medical-legal partnership (MLP) approach
2. why community policing matters for health
3. how your work intersects with public safety approaches
4. concrete strategies for engaging in community-oriented policing initiatives that affect the health and well-being of the communities you serve.

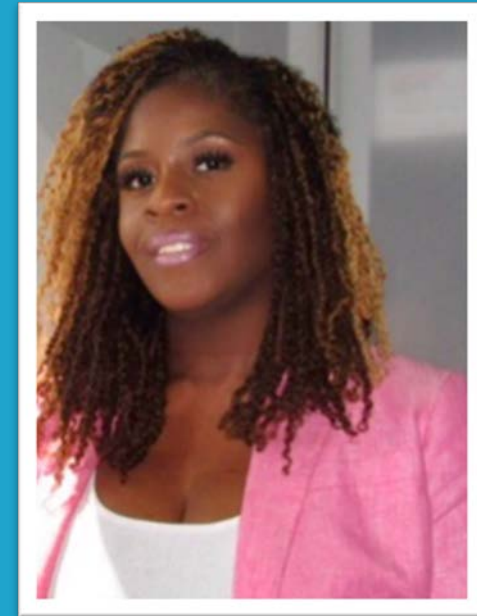
# The Panel of Subject-Matter Experts



**Keegan Warren-Clem, JD, LLM**  
**TLSC Medical-Legal Partnerships**



**Rachael A. Rezabek, JD**  
**Kirkland & Ellis LLP**



**Staci Lofton, JD, MPH**  
**Harris County Public Health**





## **MEDICAL-LEGAL PARTNERSHIP**

is an intervention where legal and health care professionals collaborate to help patients resolve

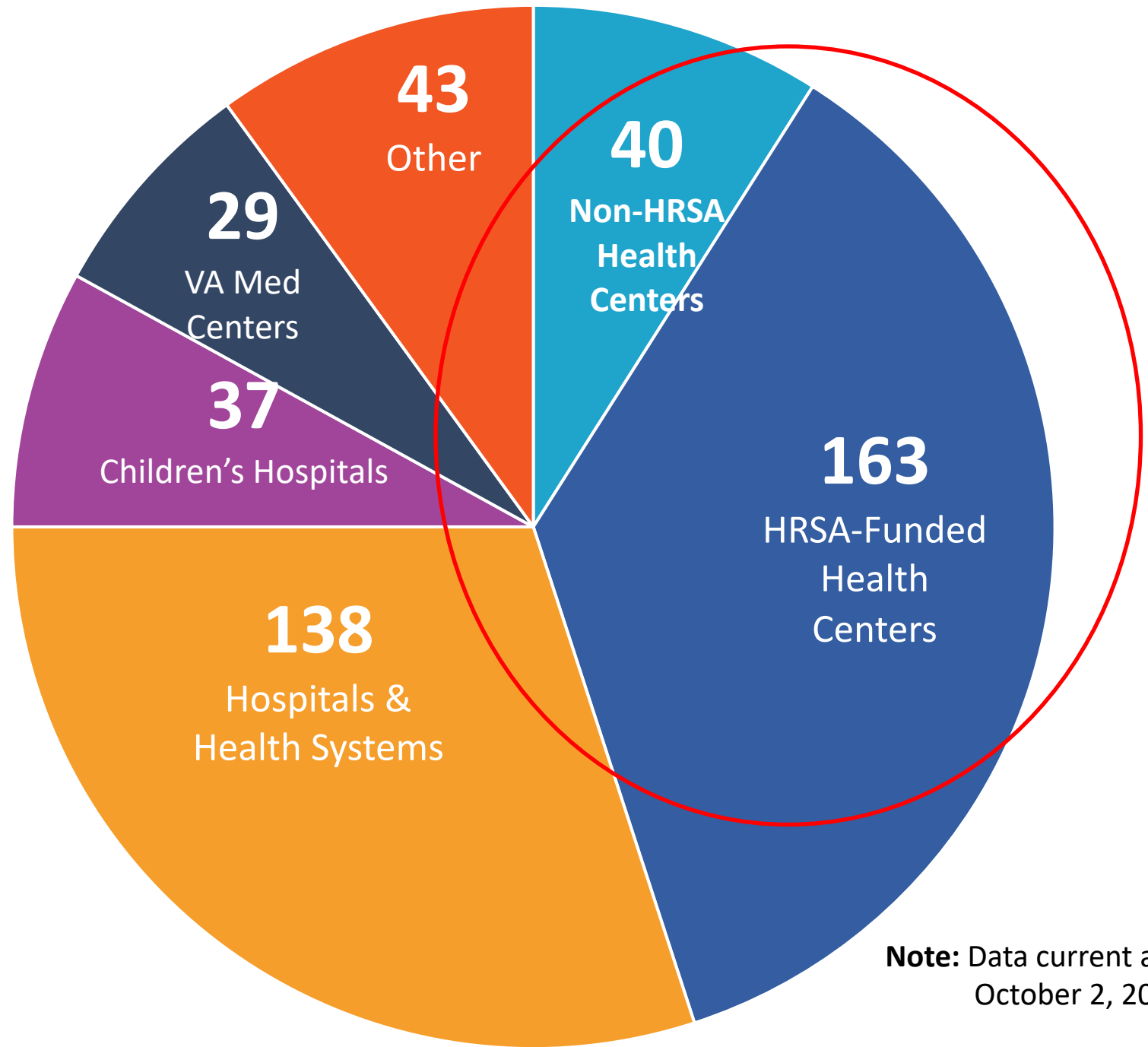
**SOCIAL, ECONOMIC &  
ENVIRONMENTAL FACTORS**

that contribute to

**HEALTH DISPARITIES**

and have a remedy in civil law.

MLPs at  
**450**  
health care  
orgs in  
**49**  
States & D.C.



**Note:** Data current as of  
October 2, 2020.

# MLPs embed lawyers as members of the healthcare team **creating:**

## Legal Assistance

to address patients' social needs & help the health center workforce operate at "top of license"

## Training

to build knowledge, capacity & skills that strengthen the health center workforce's response to SDOH

## Clinic-Level Changes

that leverage legal expertise to shape clinical practices to address many patients' needs at once

## Policy Change Strategies

that advance healthy regulatory, administrative, & legislative policy solutions for whole communities

- ✓ Healthier patients
- ✓ A stronger health center workforce
- ✓ Improved health equity

Polling Question:

**To what extent do you agree that a community's relationship with law enforcement affects the health of patients?**

# From Patients... | ... to Policy



## Mission:

to improve the health of all Texans by supporting and promoting collaboration between legal and health professionals to address the structural problems that underlie health inequities and contribute to health-harming legal needs.



**TEXAS**

**MEDICAL-LEGAL PARTNERSHIP**

**COALITION**

<https://www.txmllpc.org/>

## • Goals:

- create a community of MLPs and other resource partners who can share their work, expertise, and best practices among its members;
- advise and provide technical assistance to organizations wishing to establish an MLP;
- advocate for health-affirming laws and policies;
- and promote the development and operation of MLPs, including access to resource materials for establishing an MLP.





TEXAS  
MEDICAL-LEGAL PARTNERSHIP  
COALITION

[About](#) [Events](#) [Blog](#) [Resources](#) [Membership](#) [Contact](#)

[For Members](#)

# Police De-escalation:

## Warning Before Shooting, Use-of-Force Continuum, De-escalation Trainings and Definitions

Developed by Texas Legal Services Center and Kirkland & Ellis LLP.

### Police Violence Through a Public Health Lens

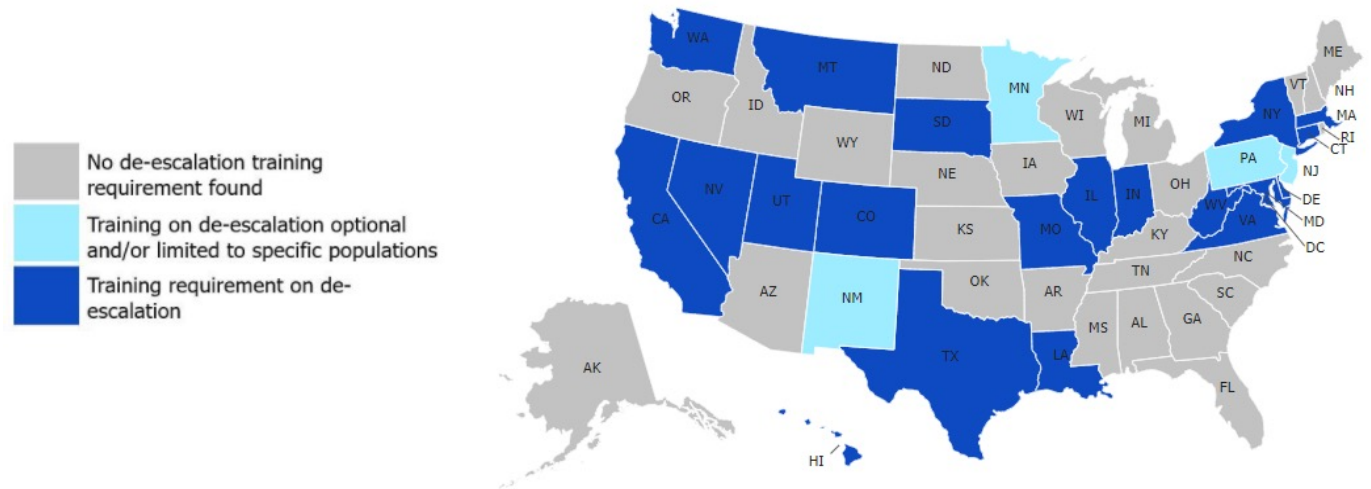
Police violence is a critical public health issue. Police violence results in disproportionate rates of deaths, injuries, trauma, and stress in marginalized communities<sup>1</sup>. For instance, 1 in every 1,000 Black men are expected to be killed by police, while the lifetime risk for white men and boys is about 39 deaths per 100,000<sup>2</sup>. Race, gender, and age have been found to be correlative factors for police killing. In addition, police use of force is one of the leading causes of death for young men of color<sup>3</sup>. Disproportionate policing and poverty in communities of color contribute to mortality and morbidity because lethal policing restricts social, economic, and physical well-being<sup>4</sup>.

### The Role of Medical-Legal Partnerships in Addressing Health-Impacting Racism

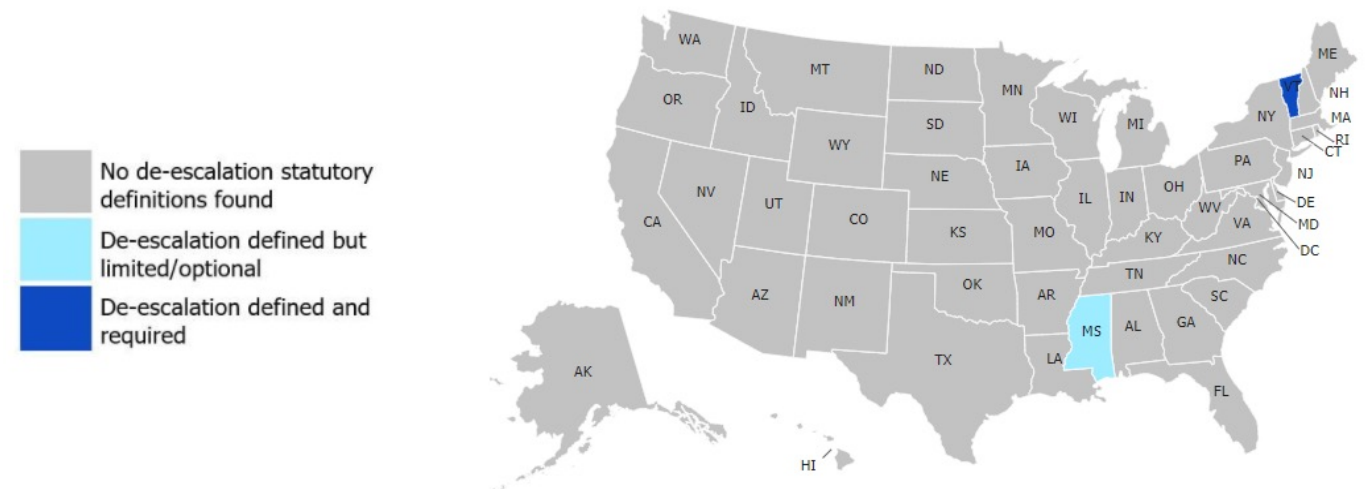
Law and medicine are inseparable, intertwined, because of the many ways in which law and medicine intersect to impact health outcomes.

De-escalation can be defined as non-violent strategies to decrease the intensity of a situation by “communicating with subjects, maintaining distance, and otherwise eliminating the need to use force”.

## Training Requirements

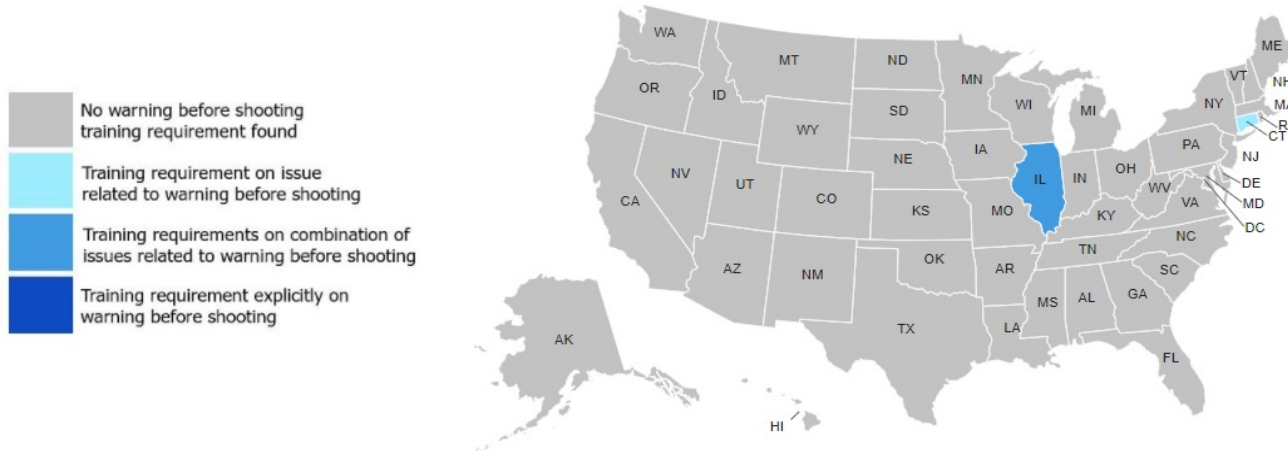


## Statutory Definitions

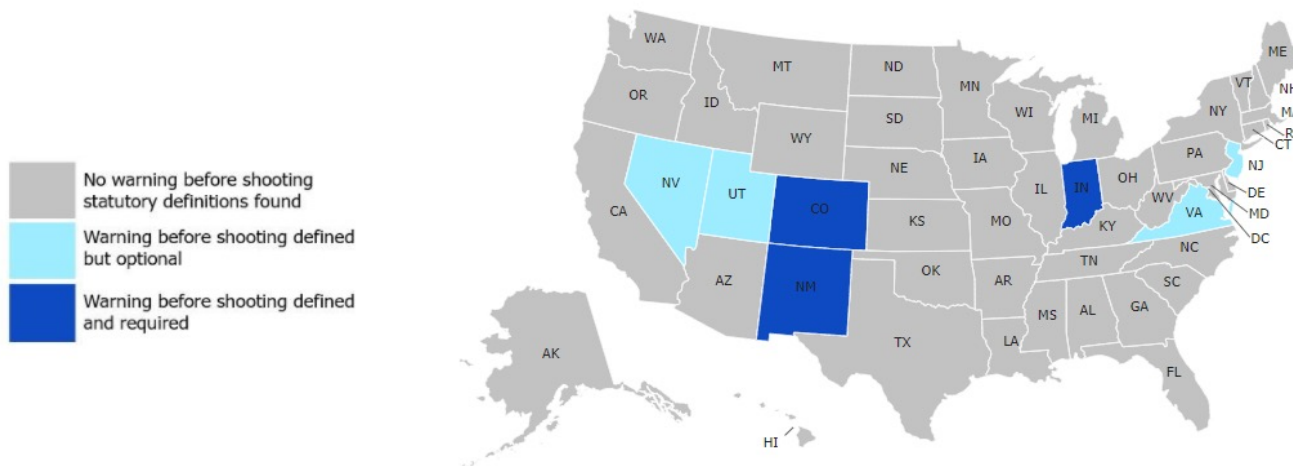




## Training Requirements



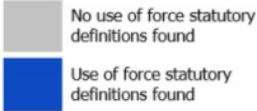
## Statutory Definitions



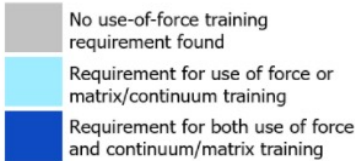
Warning before shooting is defined as a “verbal warning in situations before the use of deadly force.”

The use-of-force continuum is defined as a restriction of the “most severe types of force to the most extreme situations with clear policy restrictions on the use of each police weapon and tactic.”

## Statutory Definitions



## Training Requirements





# Leveraging Texas MLP Coalition to Pursue Health Justice

9/30/2021



Harris County  
**Public Health**  
Building a Healthy Community

#HARRISCARES | TWITTER: @HCPHTX

**Harris Cares:  
Focus Issues**



Chronic Diseases



Family Health



Emergency  
Preparedness



Environmental  
Health



Infectious  
Diseases

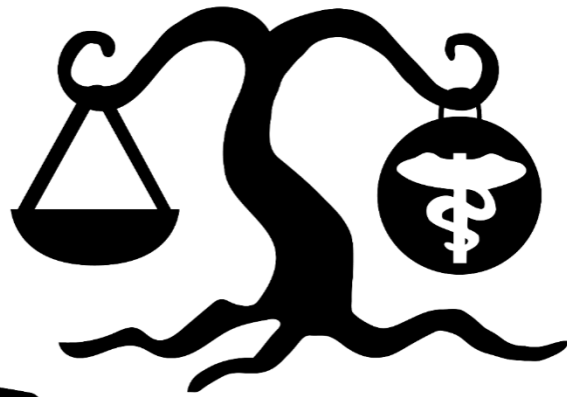


Injury



Mental and  
Behavioral Health

# Texas MLP Coalition



The Coalition aims to improve the health of all Texans by supporting and promoting partnerships between legal and healthcare professionals to address the **structural problems** that underlie **health inequities** and contribute to **health-harming social needs**.



Harris County  
**Public Health**  
Building a Healthy Community

#HARRISCARES | TWITTER: @HCPHTX

**Harris Cares:  
Focus Issues**



Chronic Diseases



Family Health



Emergency  
Preparedness



Environmental  
Health



Infectious  
Diseases

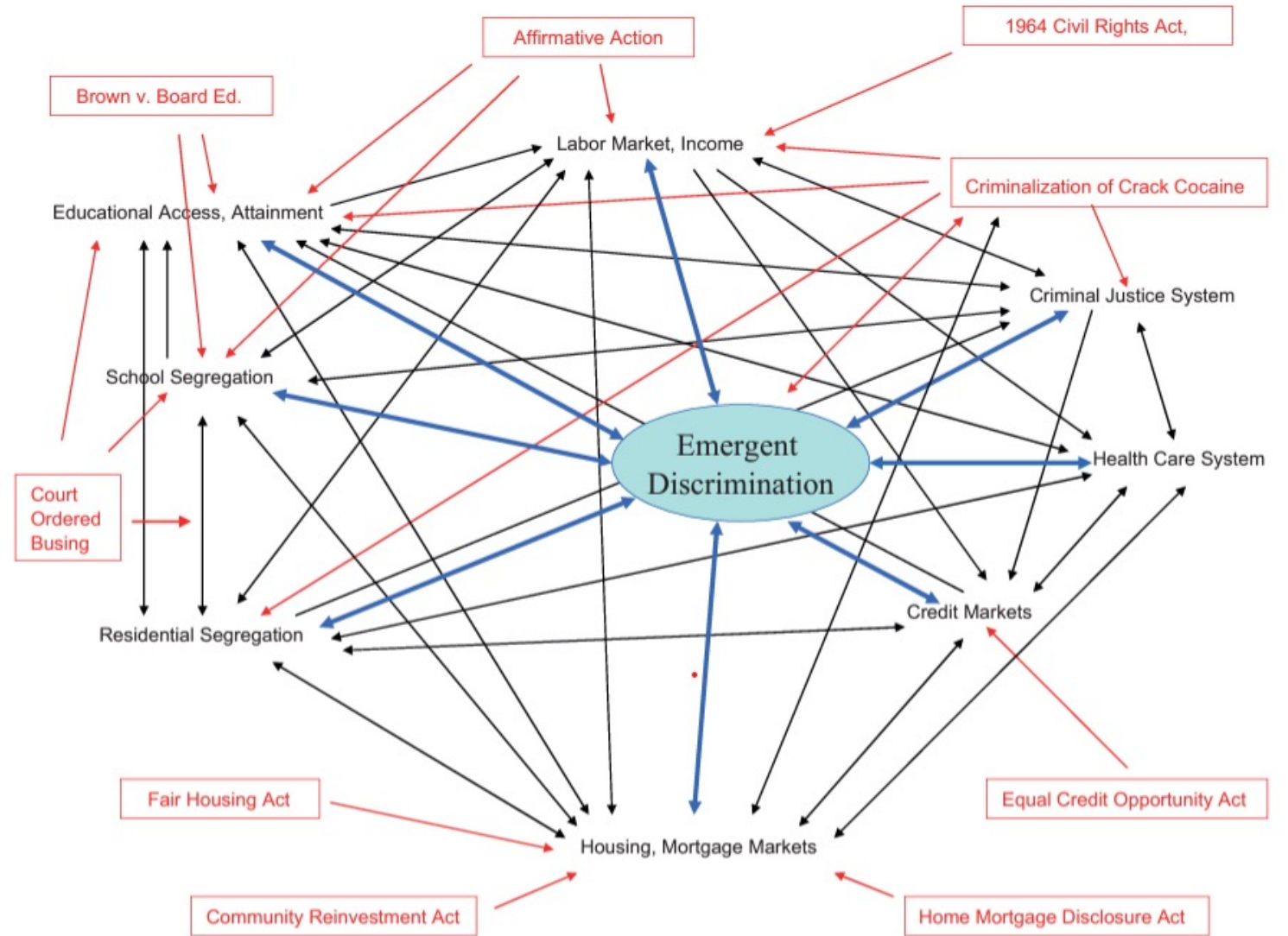


Injury



Mental and  
Behavioral Health

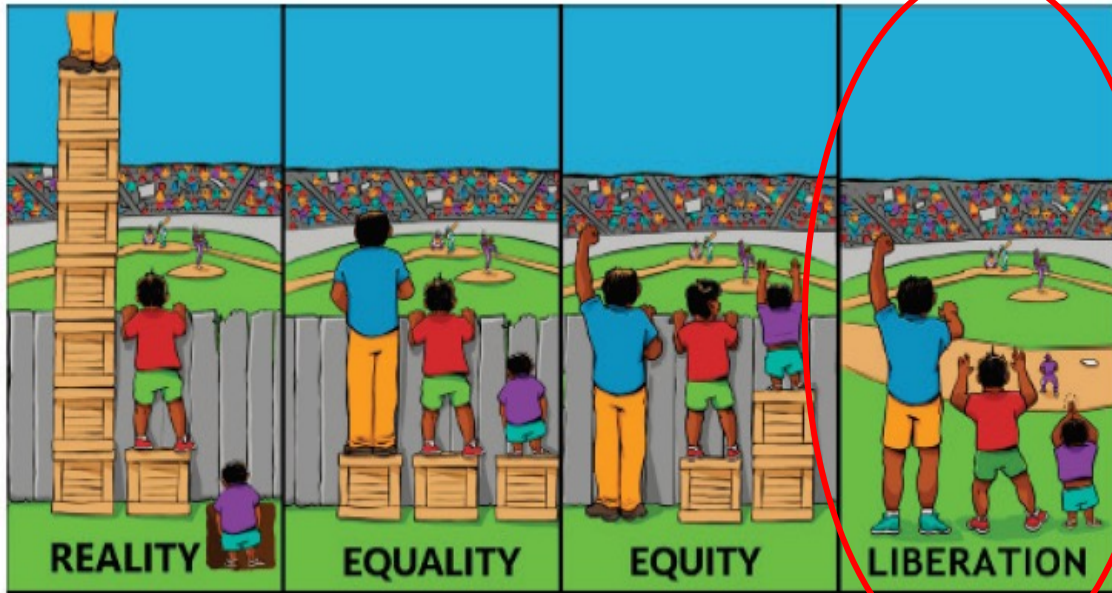
# Texas MLP Coalition: Addressing Root Causes



Reskin, B. (2012). The Race Discrimination System. *Annu. Rev. Sociol.*, 38, 17-35



# Pursuit of Health Justice: Addressing the Root Causes



The difference between the terms equality, equity, and liberation, illustrated;

© Interaction Institute for Social Change | Artist: Angus Maguire

Barrier to Health	Legal Need Addressed By MLP
Insurance/ Income Status	<ul style="list-style-type: none"> <li>• Social Security benefits</li> <li>• Insurance access</li> <li>• Food Stamps</li> </ul>
Housing Status	<ul style="list-style-type: none"> <li>• Eviction/Foreclosure Prevention</li> <li>• Sanitary housing conditions</li> </ul>
Education/Employment	<ul style="list-style-type: none"> <li>• Discrimination</li> <li>• ADA Compliance</li> <li>• Guardianship</li> </ul>

Sandel, M., Hansen, M., Kahn, R., Lawton, E., Paul, E., Parker, V., Morton, S., & Zuckerman, B. (2010). Medical-Legal Partnerships: Transforming Primary Care By Addressing the Legal Needs of Vulnerable Populations. *Health Affairs*, 29(9), 1697- 1704



Harris County  
**Public Health**  
Building a Healthy Community

#HARRISCARES | TWITTER: @HCPHTX

**Harris Cares:**  
**Focus Issues**



# MLP Resources to Realize Health Justice

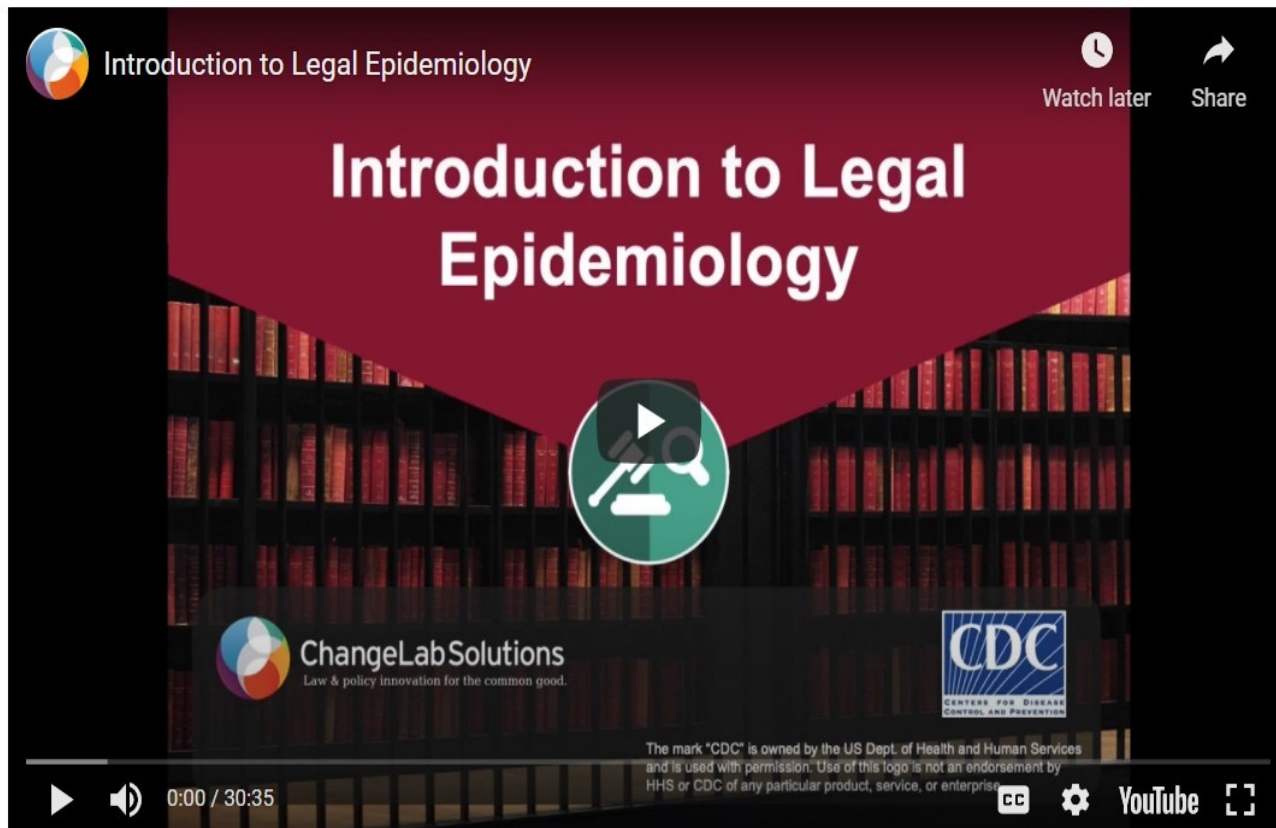


Building the evidence and mobilizing advocates in support of legal reform





# Approach: Legal Epidemiology



- The scientific study of how laws and policies impact public health
- Formal method for observing and measuring how a law or policy functions to create, perpetuate, or exacerbate health inequities
- Compare the differential impact of laws as enacted and implemented across jurisdictions and over time



Harris County  
**Public Health**  
Building a Healthy Community

#HARRISCARES | TWITTER: @HCPHTX

**Harris Cares:**  
**Focus Issues**



# TXMLP Legal Epidemiology Practice

“Law enforcement violence is a critical public health issue” - APHA

- In 2016, there were 76,440 nonfatal injuries due to legal intervention
- Marginalized populations are inequitably affected by law enforcement action and violence.
  - People of color accounted for more than 50% of years of life lost due to legal intervention in 2016 but account for just under 40% of the U.S. population
  - Correlation between deaths of Black individuals due to law enforcement violence and the subsequent poor mental health among Blacks living in the same State

<https://www.apha.org/policies-and-advocacy/public-health-policy-statements/policy-database/2019/01/29/law-enforcement-violence>



Harris County  
**Public Health**  
Building a Healthy Community

#HARRISCARES | TWITTER: @HCPHTX

**Harris Cares:  
Focus Issues**



# TXMLP Legal Epidemiology Practice

**Research Question:** What are the [individual and community] health impacts of police de-escalation training?

## Secondary Questions

1) How is police de-escalation training implemented, practiced, and enforced?

2) What organizational policies/practices (e.g. community oriented policing) influence the implementation of police de-escalation?

## Governing Law

**Tex. Occ. Code Ann. § 1701.253(n)** Officers must complete a statewide training program on de-escalation and limiting the use of force in dealing with members of the public.

**Tex. Pen. Code Ann. § 9.04** General statute defines instances where the use of force is justifiable.



# Legal Epidemiology: A tool for legal reform to advance health justice

## Legal epidemiology is critical field of scientific research

- Identify the status and trends of public health laws
- Determine whether a law influences health outcomes and/or social determinants
- Build evidence to support the design, implementation, and diffusion of legal solutions
- Inform policymakers' public health related decisions





# Legal Epidemiology Resources

- 1) Public Health Law Center at the Centers for Disease Control and Prevention (CDC)
  - <https://www.cdc.gov/phlp/publications/topic/resources/legalepimodel/index.html>
- 2) ChangeLab Solutions
  - <https://www.changelabsolutions.org/good-governance/phla/legal-epidemiology-resources>
- 3) Temple University Center for Public Health Law Research
  - <http://publichealthlawresearch.org/method/legal-epidemiology-training-and-educational-resources>



# Thank you

**Email: [Staci.Lofton@phs.hctx.net](mailto:Staci.Lofton@phs.hctx.net)**

**Special thank you to ChangeLab Solutions and the  
Public Health Law Center at Centers for Disease  
Control and Prevention**



Harris County  
**Public Health**  
Building a Healthy Community

#HARRISCARES | TWITTER: @HCPHTX

**Harris Cares:  
Focus Issues**



Chronic Diseases



Family Health



Emergency  
Preparedness



Environmental  
Health



Infectious  
Diseases



Injury



Mental and  
Behavioral Health

**Thank you to panelists and the audience.**

**The recording and slides will be shared with all registrants and post on our website.**

**Let us know if you enjoyed this content.  
Please complete the follow-up survey.**

# Contact Information

---

Bethany Hamilton

Co-Director at NCMLP

bhamilton1@gwu.edu



[medical-legalpartnership.org](https://medical-legalpartnership.org)



[National\\_MLP](https://twitter.com/National_MLP)