

# ADVANCING MLP IN HEALTH CENTERS LEARNING COLLABORATIVE

4-SESSION SERIES ON MAY 7,  
MAY 21, JUNE 4 & JUNE 18 @  
2 PM EST

AN OPPORTUNITY FOR HEALTH  
CENTERS & CIVIL LEGAL  
SERVICES STAFF TO CONNECT

**REGISTER**



Session 3 | June 4, 2021

## Justice-Involved Populations & Medicaid

Faculty



**Dan Mistak, JD**  
Community Oriented  
Correctional Health Services



**Andy McMahon, MPA**  
UnitedHealthcare  
Community & State

NCMLP Moderators:

**Bethany Hamilton, JD and Danielle Rahajason, MPH**

National Center for Medical  Legal Partnership

AT THE GEORGE WASHINGTON UNIVERSITY

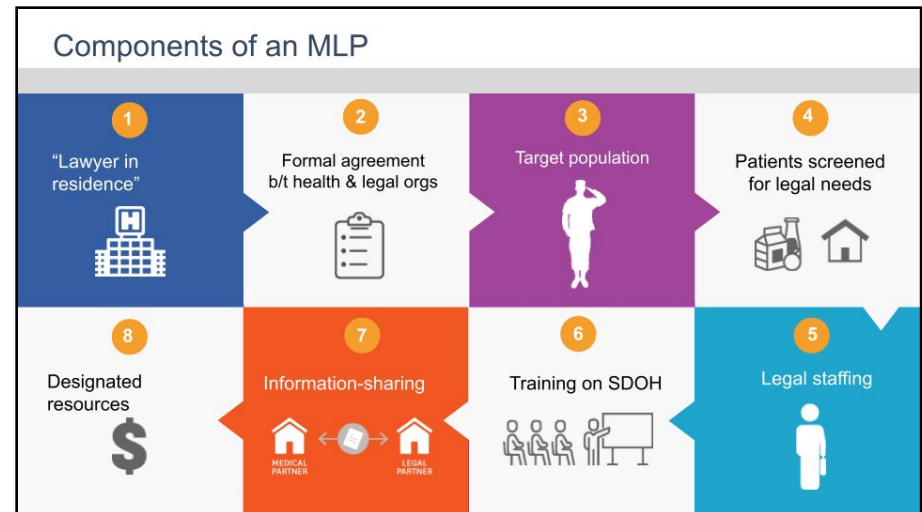
# Acknowledgements

This project is supported by the Health Resources and Services Administration (HRSA) of the U.S. Department of Health and Human Services (HHS) as part of an award totaling \$625,000 with 0 percent financed with non-governmental sources. The contents are those of the author(s) and do not necessarily represent the official views of, nor an endorsement by HRSA, HHS, or the U.S. Government. For more information, please visit [HRSA.gov](https://www.hrsa.gov).

# Learning Objectives

In this learning collaborative, participants will engage in focused discussions about the core components of medical-legal partnerships that:

1. help them identify specific challenges that relate to screening, identifying and referring patients with legal needs and information sharing
2. help them establish a consistent and sustainable financial base for their MLP programs
3. support continuous learning and improvement for building a stable, committed, and skilled workforce that meets the needs of the population they serve.



Where we've been...  
**Session 1: Overview and Breakout Groups**  
**Session 2: Screening & Information Sharing**



What SDOH problems do we want to address?



Build it as a direct service or contract it: How will we staff our integrated legal services?



How are we going to pay for it?




SCREENING &  
INFORMATION  
SHARING

How will we integrate legal services into our workflows and systems?

What we'll discuss today:  
**Session 3: What SDOH problems do we want to address and how are we going to pay for it?**

**CONVERSATION 1**

What SDOH problems do we want to address?

National Center for Medical  Legal Partnership  
AT THE GEORGE WASHINGTON UNIVERSITY


**CONVERSATION 3**

Build it as a direct service or contract it:  
How will we staff our integrated legal services?

National Center for Medical  Legal Partnership  
AT THE GEORGE WASHINGTON UNIVERSITY

**CONVERSATION 4**

How are we going to pay for it?

National Center for Medical  Legal Partnership  
AT THE GEORGE WASHINGTON UNIVERSITY

**CONVERSATION 8**

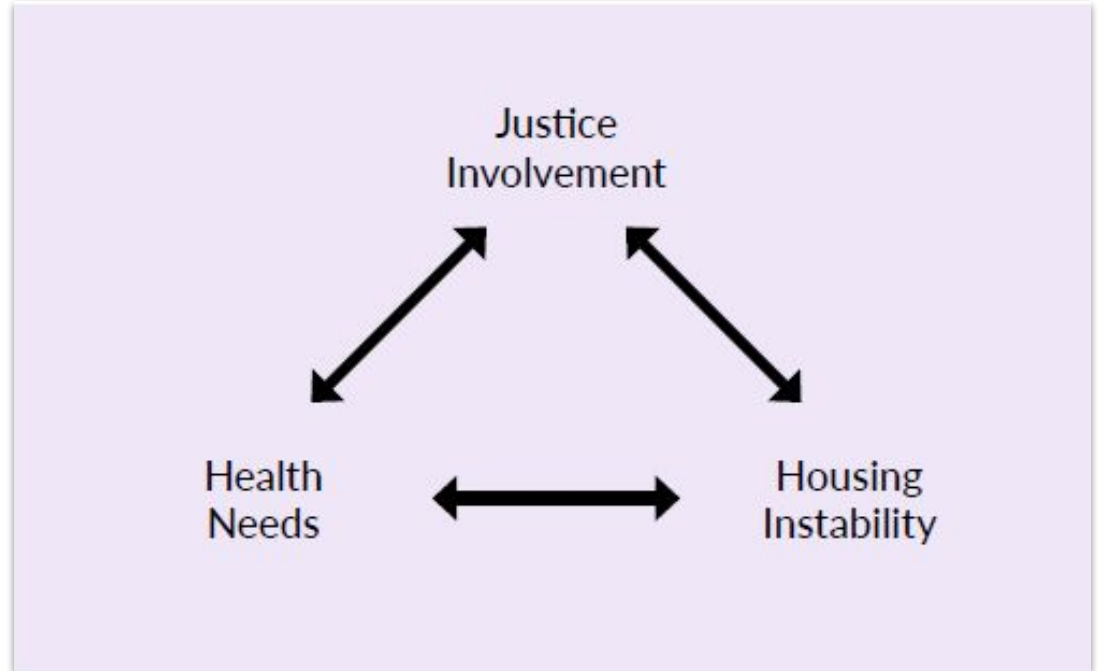
SCREENING & INFORMATION SHARING

How will we integrate legal services into our workflows and systems?

National Center for Medical  Legal Partnership  
AT THE GEORGE WASHINGTON UNIVERSITY

# The Overlapping Complex Needs of Justice-Involved Health Center Patients

Health centers with public or private funding to reach special and vulnerable populations have additional leverage to connect patients with resources that address the social determinants of health (e.g. enabling services, housing services, legal services).



<https://medical-legalpartnership.org/mlp-resources/justice-system-involved-issuebrief/>

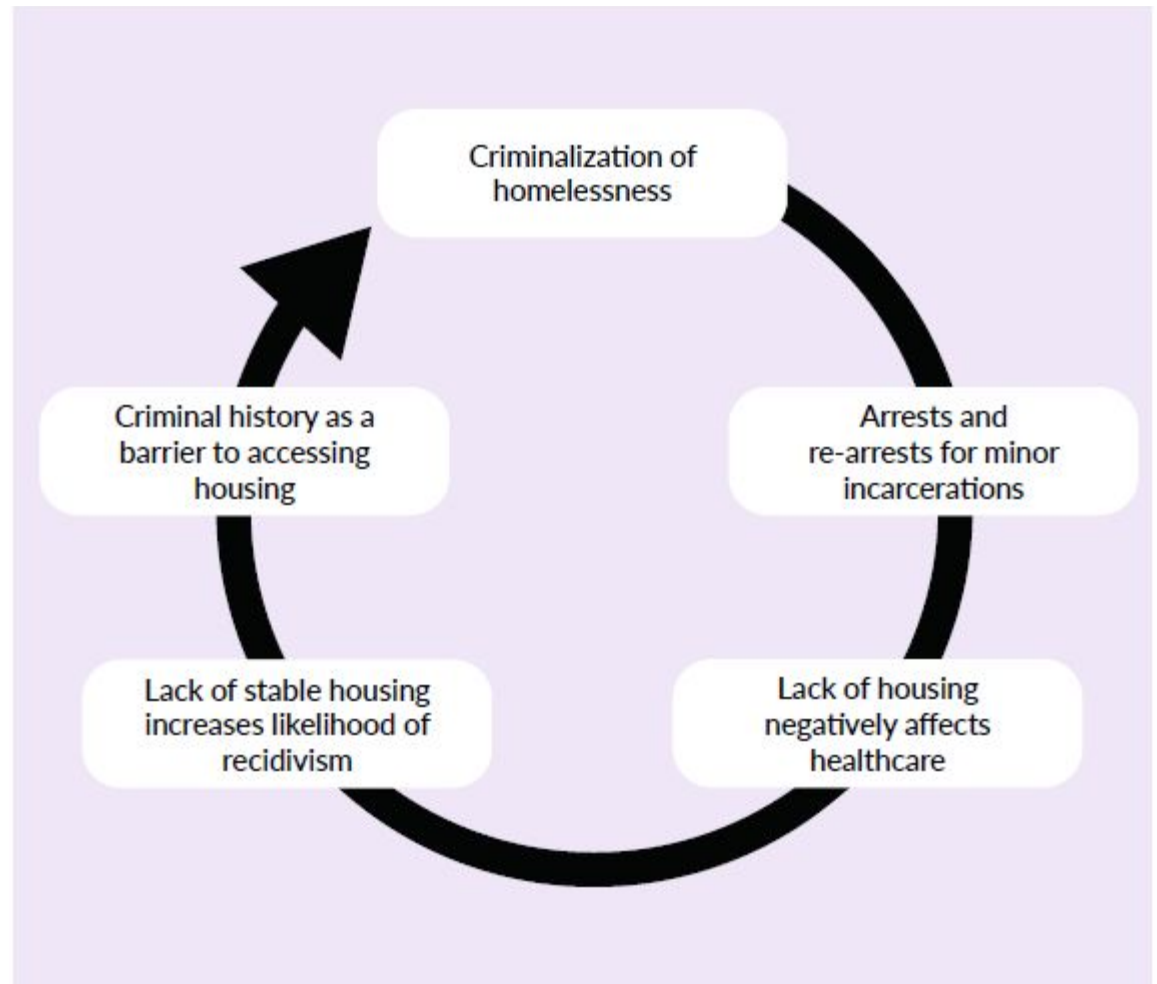
# Complex Health Challenges for Justice-Involved Populations

	Justice-Involved Population Prevalence	Community Prevalence
Cancer	8.0% [4]	3.0 - 4.0% [4]
Cardiovascular Disease	38.0% [4]	18.0 - 20.0% [4]
Diabetes	Prisons: 9.0% [3], Jails: 7.3% [3]	6.5% [3]
	14.0% [4]	7.0 - 17.0% [4]
Hypertension	Prisons: 30.2% [3], Jails: 26.3% [3]	18.1% [3]
	39.0% [4]	27.0 - 42.0% [4]
Any Chronic Condition	Prisons: 43.9% [3], Jails: 44.7% [3]	31.0% [3]

<https://medical-legalpartnership.org/mlp-resources/justice-system-involved-issuebrief/>



# Cycle of Incarceration



<https://medical-legalpartnership.org/mlp-resources/justice-system-involved-issuebrief/>



# Understanding and Employing Strategies to Meet the Needs of Justice-Involved Patients

**Data overwhelmingly supports the need for service coordination.**

Health centers with public or private funding to reach special and vulnerable populations have additional leverage to connect patients with resources that address the social determinants of health (e.g. enabling services, housing services, legal services).

<https://medical-legalpartnership.org/mlp-resources/justice-system-involved-issuebrief/>

# Case Study: Outreach Court

## **Albuquerque Health Care for the Homeless (AHCH)**

AHCH has partnered with local officials to redefine avenues of clearing citations and tickets. Rather than requiring community service or employment, establishing services at AHCH can now be a way of erasing charges. Through this outreach court partnership, AHCH has helped shift perspectives from traditional punitive measures toward emphasizing health services.

<https://medical-legalpartnership.org/mlp-resources/justice-system-involved-issuebrief/>

# Case Study: Social Impact Bond

## **Colorado Coalition for the Homeless (CCH)**

Through a unique “Pay for Success” grant opportunity, CCH prioritizes housing and wrap around services to clients with a history of justice involvement and emergency service utilization. Funding for this project comes from CCH’s involvement in a Social Impact Bond (SIB), which is a collaboration between:

- CCH
- The City of Denver
- Mental Health Center of Denver
- Denver Police Department
- Various Private Investors

<https://medical-legalpartnership.org/mlp-resources/justice-system-involved-issuebrief/>

Session 3 | June 4, 2021

# Justice-Involved Populations & Medicaid

## Faculty



**Dan Mistak, JD**

Community Oriented  
Correctional Health Services



**Andy McMahon, MPA**

UnitedHealthcare  
Community & State

ADVANCING  
MLP IN HEALTH  
CENTERS  
LEARNING  
COLLABORATIVE

4-SESSION SERIES ON MAY 7,  
MAY 21, JUNE 4, & JUNE 10 @  
2 PM EST

AN OPPORTUNITY FOR HEALTH  
CENTERS & CIVIL LEGAL  
SERVICES STAFF TO CONNECT



National Center for Medical  Legal Partnership

AT THE GEORGE WASHINGTON UNIVERSITY

# FACULTY



Dan Mistak, JD of Community  
Oriented Correctional Health  
Services



Andy McMahon of UnitedHealthcare  
Community & State

NEW

May 2021

## How Health Center Care Teams Can Address Health and Housing for Patients Involved With the Justice System



# RESOURCES

## [How Health Center Care Teams Can Address Health and Housing for Patients Involved With the Justice System](#)

By The National Nurse-Led Care Consortium, the National Health Care for the Homeless Council & the National Center for Medical-Legal Partnership — The National Nurse-Led Care Consortium, the National Health Care for the Homeless Council & the National Center for Medical-Legal Partnership

This issue brief aims to provide an overview of both the civil and criminal justice systems in the United States. It also describes the cyclical relationship between those systems and housing insecurity (including homelessness). Based on this foundation, the brief outlines potential workflow considerations for health centers working to reduce health disparities for patients and families.

<https://medical-legalpartnership.org/mlp-resources/justice-system-involved-issuebrief/>

# RESOURCES

## [Health Center MLP Toolkit. "Bringing lawyers onto the health center care team to promote patient & community health"](#)

By the National Center for Medical-Legal Partnership

Part I outlines nine conversations that a health center team should have with its legal partners to plan for an MLP's long-term success and to integrate it into the health center's operations. **These conversations cover everything from staffing to funding to information sharing. Each conversation includes questions for your team, decisions you will need to make, advantages and challenges to different approaches, and links to case studies and more information.**

Part II is a deep dive into the specifics of how to develop screening, referral, and service delivery workflows.

Part III looks at how integrating legal services can support health center workforce development, with a particular focus on training.

Part IV illustrates the types of projects MLPs can engage in to help your health center move upstream to address social determinants of health and health equity at a policy level.





# Contact Information

---

Bethany Hamilton, JD  
Co-Director at NCMLP  
bhamilton1@gwu.edu



[medical-legalpartnership.org](http://medical-legalpartnership.org)



[National\\_MLP](https://twitter.com/National_MLP)

Please complete the survey.

join us on June 18th to learn more about  
nurse-led MLPs and serving

**Peer Mentoring Session, June 18, 2021**

<https://www.surveymonkey.com/r/R5B8TPM>